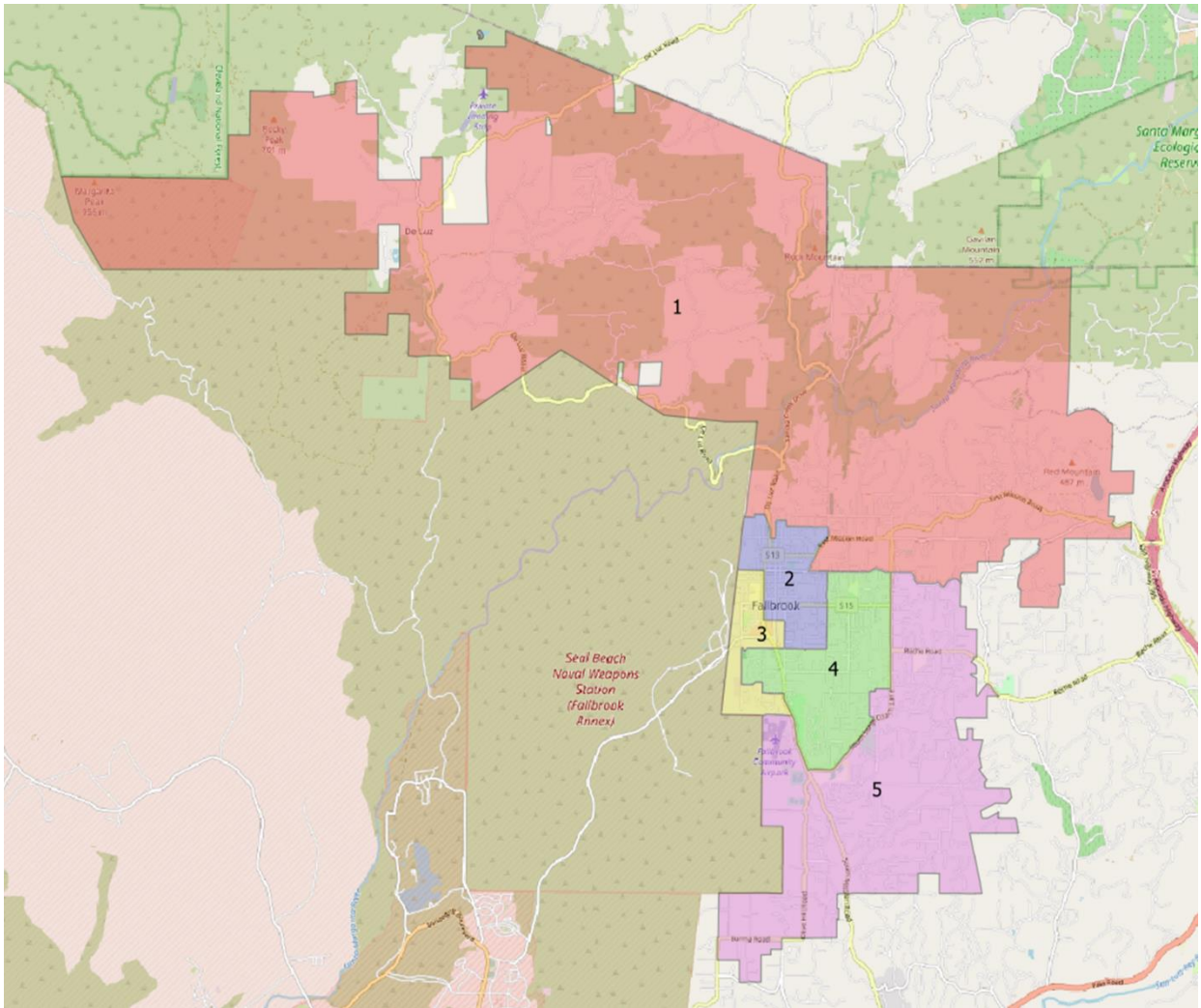


Attachment 2

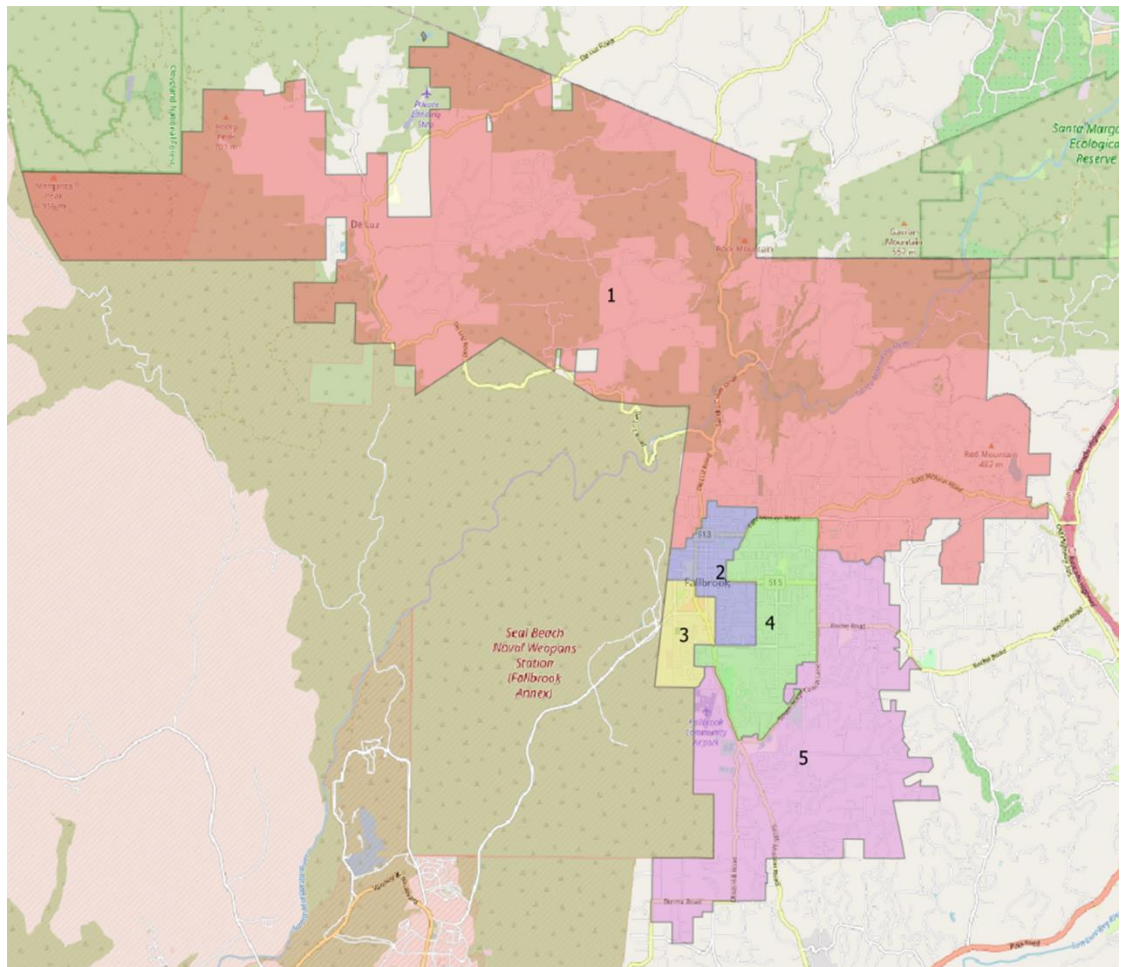
Draft Map Options and Demographic Data

Map Option 1



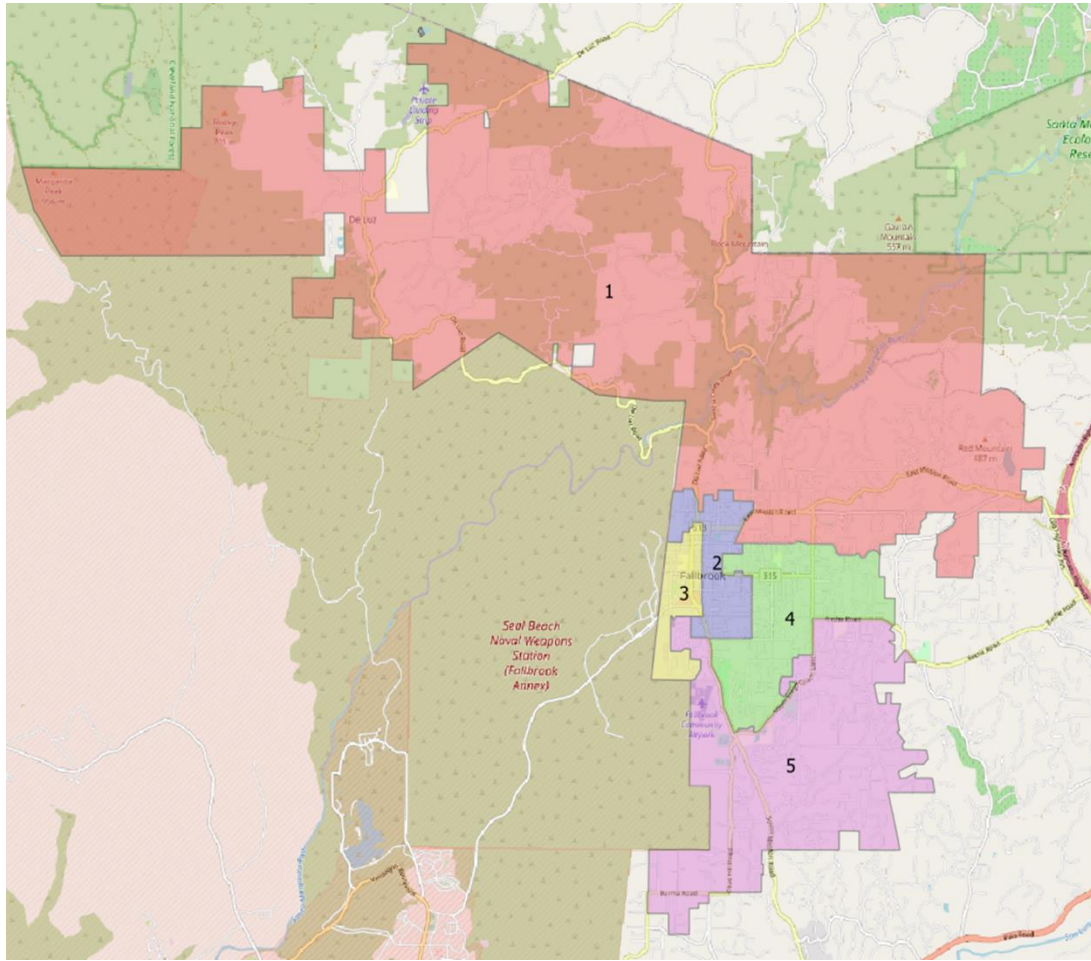
Division	Total Population	Raw Population	% Population	Latino	CVAP*19 Total	CVAP19 NL** White	CVAP19 NL Black	CVAP Hispanic	CVAP19 Not Hispanic	CVAP19 NL AIAN***	CVAP19 NL ASIAN	CVAP19 NL Hawaiian	CVAP19 NL Other
1	7,135	187	2.70%	2,284	4,802	3,606	37	830	3,995	38	213	-	56
2	7,068	120	1.73%	4,567	4,402	1,926	55	2,270	2,132	42	109	-	24
3	6,888	-60	-0.86%	5,398	2,804	1,024	218	1,421	1,383	-	24	28	46
4	6,890	-58	-0.83%	2,705	5,153	3,193	169	1,621	3,571	7	111	51	2
5	6,757	-191	-2.74%	1,711	5,170	3,891	35	982	4,146	26	128	-	-
Total	34,738												
Ideal	6,948	Deviation	5.44%										
*CVAP = Citizen Voting Age Population													
**NL = Non Latino													
***AIAN = American Indian Alaskan Native													

Map Option 2



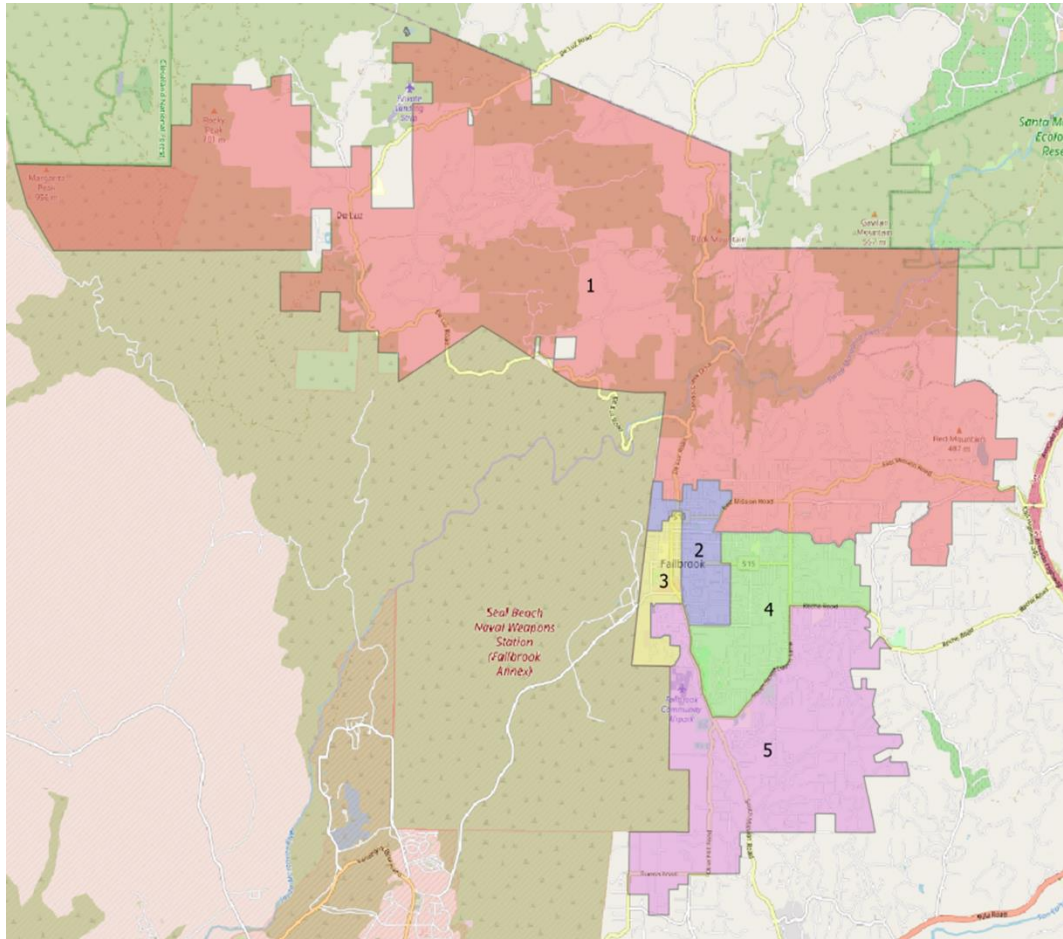
Division	Total Population	Raw Population	% Population	Latino	CVAP*19 Total	CVAP19 NL** White	CVAP19 NL Black	CVAP Hispanic	CVAP19 Not Hispanic	CVAP19 NL AIAN***	CVAP19 NL ASIAN	CVAP19 NL Hawaiian	CVAP19 NL Other
1	6,695	-253	-3.64%	2,045	4,473	3,437	82	776	3,718	22	78	-	56
2	6,909	-39	-0.56%	4,793	4,095	1,768	95	2,059	2,046	21	125	12	24
3	6,821	-127	-1.82%	5,059	3,240	1,018	246	1,765	1,461	-	33	16	47
4	7,341	393	5.66%	2,990	5,228	3,425	45	1,519	3,742	44	217	51	1
5	6,972	24	0.35%	1,778	5,295	3,992	46	1,005	4,260	26	132	-	-
Total	34,738												
Ideal	6,948	Deviation	9.30%										
*CVAP =	Citizen Voting Age Population												
**NL =	Non Latino												
***AIAN =	American Indian Alaskan Native												

Map Option C



Division	Total Population	Raw Population	% Population	Latino	CVAP*19 Total	CVAP19 NL** White	CVAP19 NL Black	CVAP Hispanic	CVAP19 Not Hispanic	CVAP19 NL AIAN***	CVAP19 NL ASIAN	CVAP19 NL Hawaiian	CVAP19 NL Other
1	6,978	30	0.44%	2,176	4,714	3,578	37	797	3,963	24	213	-	56
2	6,799	-149	-2.14%	4,512	4,367	1,742	110	2,349	2,000	14	131	-	22
3	7,133	185	2.67%	5,510	2,975	1,061	217	1,490	1,473	21	24	28	49
4	7,078	130	1.88%	2,552	5,084	3,558	34	1,359	3,752	28	128	-	1
5	6,750	-198	-2.84%	1,916	5,191	3,701	116	1,129	4,038	26	89	51	-
Total	34,738												
Ideal	6,948	Deviation	5.51%										
*CVAP =	Citizen Voting Age Population												
**NL =	Non Latino												
***AIAN =	American Indian Alaskan Native												

Map Option D



Division	Total Population	Raw Population	% Population	Latino	CVAP*19 Total	CVAP19 NL** White	CVAP19 NL Black	CVAP Hispanic	CVAP19 Not Hispanic	CVAP19 NL AIAN***	CVAP19 NL ASIAN	CVAP19 NL Hawaiian	CVAP19 NL Other
1	7,094	146	2.11%	2,242	4,818	3,620	71	843	4,024	24	211	-	56
2	6,922	-26	-0.37%	4,478	4,345	1,929	23	2,253	2,079	24	127	-	22
3	7,133	185	2.67%	5,510	2,975	1,061	217	1,490	1,473	21	24	28	49
4	6,781	-167	-2.40%	2,490	4,922	3,358	42	1,320	3,587	18	142	-	1
5	6,808	-140	-2.01%	1,945	5,271	3,673	161	1,218	4,063	26	80	51	-
Total	34,738												
Ideal	6,948	Deviation	5.07%										
*CVAP =	Citizen Voting Age Population												
**NL =	Non Latino												
***AIAN =	American Indian Alaskan Native												